

# SF Information

A PUBLICATION FOR OPS MEMBERS

# OPSnews



Vol 39 No. 5 2009 Special San Francisco Travel Information Issue



OPHTHALMIC PHOTOGRAPHERS' SOCIETY  
EYE IMAGING EXPERTS

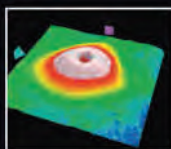


## 40TH ANNUAL EDUCATIONAL PROGRAM

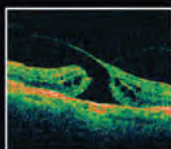
OCTOBER 23 - 27, 2009

PARC 55 HOTEL

SAN FRANCISCO, CALIFORNIA



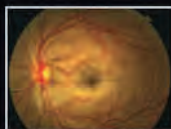
Christina Malik Consolo, CRA



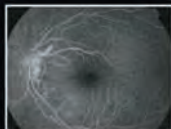
Douglas B. Critser, CRA



Denice A. Barsness, CRA,  
COMT, ROUB, FOPS



Alan Frohlichstein, CRA, FOPS



Paula Morris, CRA, FOPS



Karen McHugh, CRA

## Inside this issue:

<i>SFO Airport Information</i>	1
<i>BART</i>	1
<i>Rental Car Center</i>	2
<i>Door to Door Vans</i>	2
<i>Taxis</i>	2
<i>Parc55 Hotel Information</i>	3

# SFO Airport

**BART** is the fast, easy, inexpensive way to get to San Francisco and around the Bay Area. Trains arrive at the SFO International Terminal every 15 minutes and it's just 30 minutes to downtown San Francisco. A one-way ticket from SFO to downtown is \$8.10

The BART station at SFO is located in the International Terminal. It's a short walk from United Airlines in Terminal 3 and a slightly longer walk from Terminal 1. You can also take the free AirTrain from both terminals directly to the BART station. Just follow the signs to AirTrain and board the Red Line train. When you arrive, take the escalator down to the departures level and walk straight ahead to the BART station. Terminals 1, 2 & 3 are approximately a one to three-minute AirTrain ride to the BART station.

International passengers should turn right when leaving customs, walk to the escalator and go up to the departures level. Walk straight ahead and turn left at the art exhibit and you'll see the station entrance.

## To Downtown San Francisco

Board the Pittsburg/Bay Point train to one of four downtown San Francisco stations that are an easy walk or short cab ride to most San Francisco hotels. Powell Street - Use the Hallidie Plaza exit for the Intercontinental, Parc 55, Hilton, Nikko and Union Square hotels. Use the 4th Street

exit for the Marriott and Moscone West.

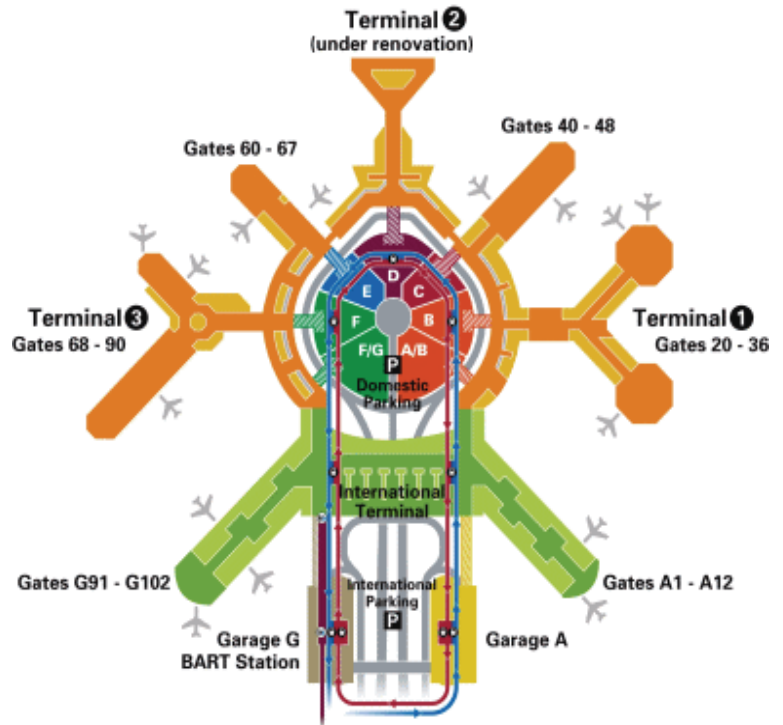
## BART Tickets

Everyone else must have a BART ticket. BART tickets are like debit cards with stored value. All BART stations have automatic ticket vending machines that accept nickels, dimes, quarters and \$1 coins, as well as \$1, \$5, \$10 and \$20 bills. You can also use a credit card in select machines. BART's fare structure is built on a mileage-based. When you enter BART, insert your ticket into the fare gate and it will be returned to you. Use the same ticket when you exit. The correct fare will be automatically deducted and tickets with remaining value will be returned. If your ticket has too little value, a sign on the fare gate will read "Underpaid: Go to Addfare." A nearby Addfare vending machine will tell you how much additional fare you must add to your ticket to exit the BART system.

## BART Schedule

Visit the [BART QuickPlanner](#) to look up BART times and use the convenient printable schedule version to take a copy with you.

## BART Weekday Service Hours



4:09 a.m. to 11:45 p.m.

BART Weekend Airport Service Hours

Sat: 5:54 a.m. to 11:45 p.m.

Sun: 8:00 a.m. to 11:45 p.m.

## Luggage

Please keep the aisles clear by storing your luggage under your seat or holding it on your lap. Some cars have space cleared by the doors to accommodate wheelchairs, bikes or strollers. If the space is not being used by a person with a disability, you may store your luggage there, but please keep it within your control at all times.

## BART Accessibility

All BART stations are accessible to persons with disabilities. Elevators and fare gates designated for persons with disabilities may also be used by airline passengers with luggage. ■

## Rental Car Center

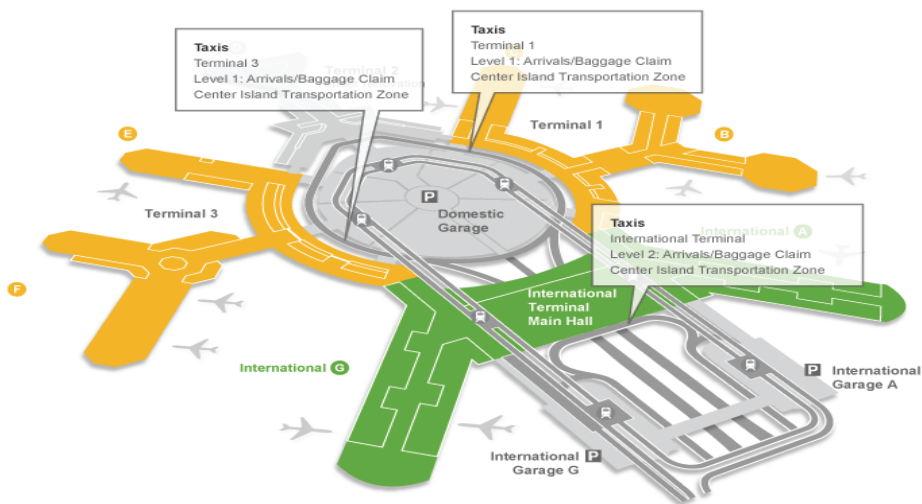
San Francisco International Airport's Rental Car Center allows travelers to pick up and drop off rental cars at one convenient, central location. Alamo, Avis, Budget, Dollar, Enterprise, Hertz, National and Thrifty car rental counters are located on the fourth floor of the SFO Rental Car Center.

Off-airport rental car agencies Fox and Payless are served by free shuttle service from the SFO Rental Car Center. Shuttles stop at the south curb of the Rental Car Center upon customer request.

To access the Rental Car Center from the airport terminals, take the AirTrain Blue Line. AirTrain, SFO's fully automated people mover system, operates 24 hours every day and provides convenient and frequent service throughout SFO. AirTrain stations are located in all terminals, terminal parking garages, the Rental Car Center and SFO's BART station. Rental Car Center address for GPS and online mapping services: 780 N. McDonnell Road San Francisco, CA 94128■

## Door to Door Vans

Door-to-door vans provide service between SFO and passenger-specified locations in shared ride vans. Depending on the number of passengers, door-to-door vans may make multiple stops. From the airport: Van service is available on a walk-up basis. However, passengers are advised to make reservations for service after 11:00 p.m. Door-to-door



vans pick up on the Departures/Ticketing Level from the roadway center island at all terminals.

Advanced Airport Shuttle  
650.504.6641

Airport Express 415.775.5121

American Airporter Shuttle  
800.282.7758

Bayporter Express 877.467.1800

Bay Shuttle 415.564.3400

Go Lorrie's Airport Shuttle  
415.334.9000

M & M Luxury Shuttle  
415.552.3200

Pacific Airport Shuttle  
415.681.6318

Peter's Airport Shuttle  
650.577.8858

Quake City Shuttle 415.255.4899

San Francisco City Shuttle  
888.850.7878

SuperShuttle 415.558.8500

## Taxis

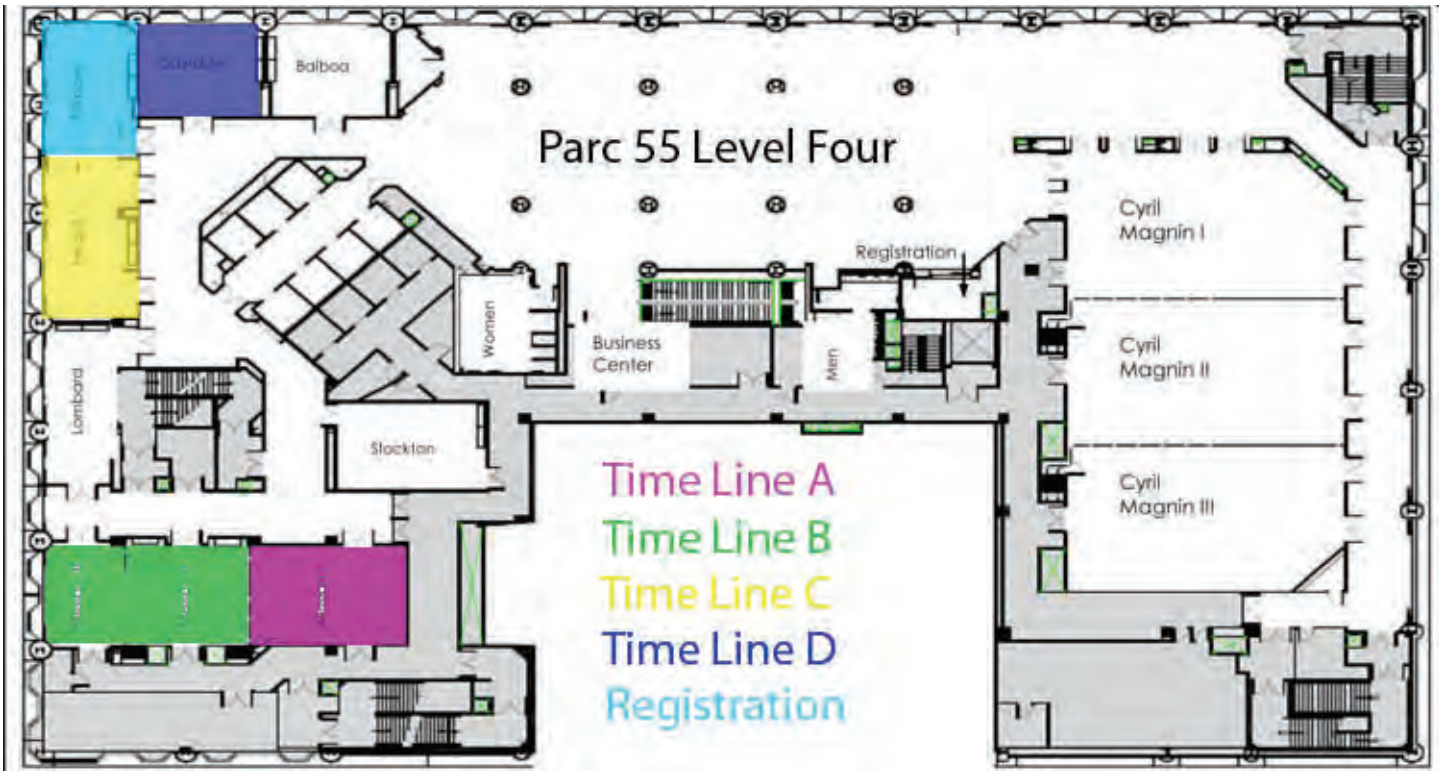
Taxis in San Francisco are metered. The rate is \$3.10 for the first 1/5 mile or flag; \$0.45 for each additional 1/5 mile or fraction thereof; and \$0.45 for each minute of waiting time or traffic time delay.

SFO: A \$2.00 exit surcharge is added to all fares for rides originating from San Francisco International Airport. Approximate fares to San Francisco from SFO: Downtown - \$37, Fisherman's Wharf - \$44■

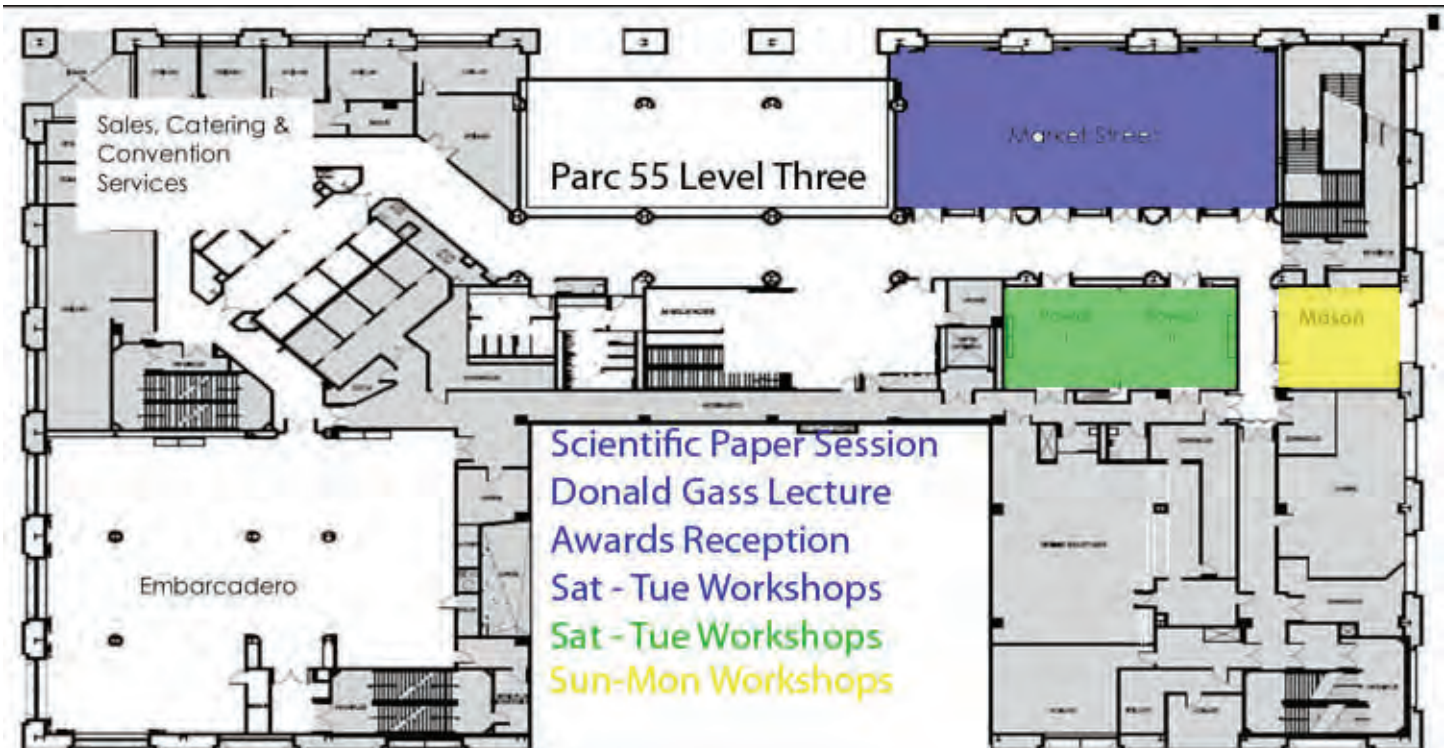
## Safety Advisory

Ignore offers of ground transportation from solicitors inside the terminal building. While these solicitors may look and sound official, they are not authorized to solicit passengers and are breaking the law. For ground transportation assistance upon arrival at SFO, please go directly to the nearest Airport Information Booth or Lodging, Transportation and Attractions Board. Information booths and boards are located on the Arrivals/Baggage Claim Level of each terminal■

# Parc55 Hotel



**55 Cyril Magnin Street  
San Francisco, CA  
415-392-8000**





**ASCRS**

ASCRS Symposium on Cataract,  
IOL and Refractive Surgery

April 9–14, 2010

Technicians & Nurses Program

April 10–12, 2010

**ASOA**

ASOA Congress on Ophthalmic  
Practice Management

April 9–13, 2010

# Guide to Online Photo Submissions

# BOSTON2010

*at the New Boston Convention & Exhibition Center*

The American Society of Cataract and Refractive Surgery  
The American Society of Ophthalmic Administrators

# Ophthalmic Photographers Society Exhibit Submission

**DEADLINE FOR SUBMISSION AND RECEIPT OF PHOTOGRAPH: JANUARY 8, 2010**

## Online Preparation and Submission

1. Online submission is open from August 5, 2009, to January 8, 2010.
2. Go to <http://ops.ascrs.org> to submit a photograph. It is important to use a valid e-mail as all correspondence regarding the entry will be sent to this e-mail address. Please read the following instructions carefully before submitting. All information must be provided or the submission will not be considered for judging.

## Categories

- ◆ Clinical Setting Photography
- ◆ Composite
- ◆ Corneal Endothelial Photography
- ◆ Cross Categories
- ◆ External Photography
- ◆ Fluorescein Angiography
- ◆ Fundus Photography, High Magnification, 20°
- ◆ Fundus Photography, Normal, 30°– 40°
- ◆ Fundus Photography, Wide Angle, 45°+
- ◆ Gonio Photography
- ◆ Gross Specimen Photography
- ◆ ICG Angiogram
- ◆ Instrumentation Photography
- ◆ Monochromatic Photography
- ◆ Ocular Coherence Tomography
- ◆ Photo/Electron Micrography
- ◆ Slitlamp Photography
- ◆ Special Effects Photography
- ◆ Surgical Photography
- ◆ The Eye as Art

**Note:** If you wish to submit an iris angiogram, please submit it in the “Fluorescein Angiography” category. Images of anterior segment lesions stained with fluorescein dye (HSV, abrasions, etc.) should be submitted in “Slitlamp Photography” category.

## Judging Panel

A panel of judges will review entries. The judges will be composed of ASCRS ophthalmologists and OPS member photographers. Judges **may not** submit entries. The judges reserve the right to reassign images to different categories.

## Award

Only winners will be listed in the final program. First, second, third, and honorable mention photographs will be selected in each category. Additionally, an overall Best in Show winner will be selected.

**Note:** Winning photographs will be displayed in the OPS exhibit at the annual meeting and in the Best for Last Session.

## Eligibility

Photographs that have not been displayed in previous OPS exhibits are eligible for entry.

## Releases

Photographs revealing patient identity must be accompanied by a typewritten, signed, and witnessed photographic release.

**Photographs received without a release will be rendered ineligible.**

## Number of Entries

**Individuals can submit up to 3 entries per category.** A single entry can consist of more than 1 photograph (e.g., 4 photographs from the same angiogram, progression studies). Extra photographs will be arbitrarily eliminated.

## Quality of Entries

Images that have obvious defects (e.g., poor focus, color imbalance, improper exposure, or significant artifacts) will not be accepted for judging. If masking reduces the artifacts, it is recommended that it be used. Recent work is encouraged.

## Format

An 8" × 10" (20.0 cm × 25.5 cm) or 11" × 14" (28.0 cm × 35.5 cm) format is encouraged. Photographs in other sizes will be accepted if they can be mounted on an 11" × 14" (28.0 cm × 35.5 cm) or 16" × 18" (40.5 cm × 46.0 cm) display board and still maintain an aesthetic appearance.

Multiple photographic entries are acceptable in the following size combinations only:

<b>Two</b>	8" × 10"	20.0 cm × 25.5 cm
<b>Two-four</b>	5" × 7"	12.5 cm × 17.5 cm
<b>Two-six</b>	4" × 5"	10.0 cm × 12.5 cm

Photomontages (multiple photographs affixed to each other) will not be accepted. A montage must be re-photographed/digitized, printed, and submitted as a single photograph.

# Ophthalmic Photographers Society Exhibit Submission

## Mounting

Mounted photographs will not be accepted. Photographs accepted for display will be mounted at ASCRS' expense. Mounting will be determined by ASCRS. All photographs will be trimmed slightly.

## Identification

Make sure you label your submissions carefully. (Please, no labels on the backs of prints). Please do not use correction fluid. Photographs should be identified on the back, top-center, with a felt-tipped pen. Please print **legibly** and label the back, top-center, of each photograph with the following information exactly as it appears on the submission.

## Example

**Full Name:** Mark Clark, CRA

**Practice or Institution:** Wake Forest University Eye Center

**City, State, Country:** Winston-Salem, NC, USA

**Print Title or Diagnosis:** Retinal Detachment

**Division Category:** Composite

- ◆ Clinical photographs must be titled with diagnosis. The terms normal, probable, or unknown are acceptable.
- ◆ Entries will not be judged on the basis of an accurate diagnosis.
- ◆ Monochromatic photographs must be labeled with the wavelength used.
- ◆ Multiple photograph entries should indicate the intended order.
- ◆ Gross specimen photographs should include final magnification with identification or contain a metric scale.
- ◆ Photomicrographs must contain information on lighting or type of micrography (polarized, phase contrast, scanning electron, etc.) and the final photograph magnification.

## Mailing Instructions

All photographs should be mailed to:

ASCRS OPS Submissions  
4000 Legato Road, Suite 700  
Fairfax, VA 22033, USA

Please package your entries carefully. All photographs must be received at the ASCRS office by **January 8, 2010**. Photographs received after this date run the risk of not being processed in time for judging.

## Return of Entries and Liability

**Photographs will not be returned unless this is specifically requested. The request must accompany your printed photograph when you ship it to ASCRS.** For requested returns: material accepted for display will be returned within 3 months of the annual meeting. Photographs not displayed will be returned within 3 months of judging. Every attempt will be made to protect the entries. ASCRS, OPS, and the judging panel do not accept responsibility for loss or damage to entries.

## Questions

Contact Jay A. Rostvold at [ops@ascrs.org](mailto:ops@ascrs.org)

### ✓ Checklist

- Include full name, degrees (limit 2), address, phone and fax numbers, and e-mail address on submission.