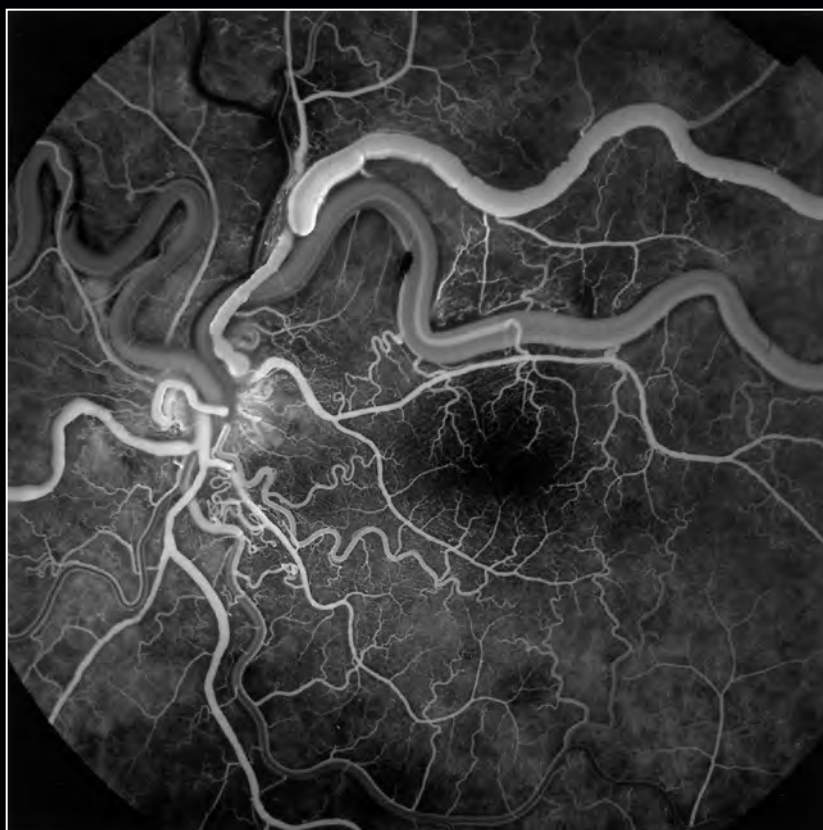


The Journal of Ophthalmic Photography

VOLUME 31 • NUMBER 1 • SPRING 2009

SINGLE
TOPIC ISSUE:
DIGITAL FUNDUS
IMAGING

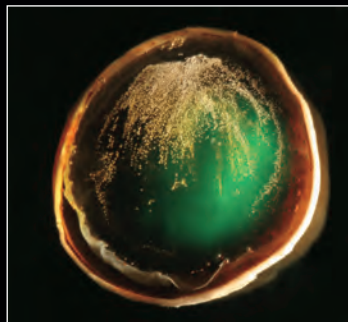
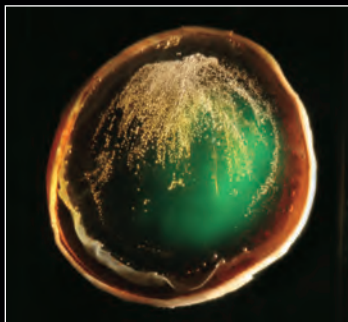


2008 SCIENTIFIC EXHIBIT BEST OF SHOW, PRINT

Fluorescein Angiogram
Wyburn-Mason Syndrome

David T. Miller, CRA

Wake Forest University Eye Center, Winston-Salem, NC



2008 SCIENTIFIC EXHIBIT BEST OF SHOW STEREO SLIDES

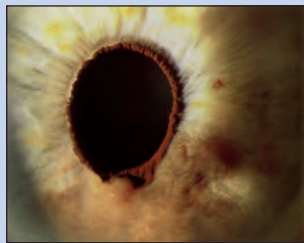
Gross Specimen Photography
*"Vitreous Pearls" Frozen Vitreous Retained
Air Bubbles After Being Thawed*

Robert Myles, CRA

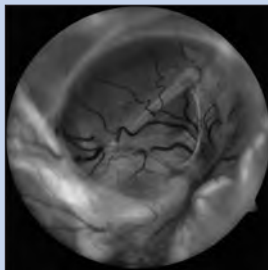
Emory Eye Center, Atlanta, GA

2008 Scientific Exhibit Winners: page 22

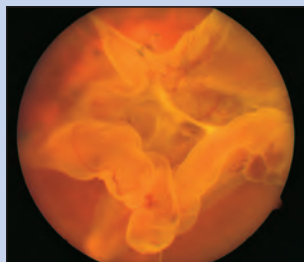
See the first and second place Print and Stereo winners. Third place and honorable mention are also listed.



Michael Stanley



Jeanne Queen, CPT



Beth Snodgrass, AS, CRA

Editorial

Frederick L Ferris III, MD; Larry D Hubbard, MAT **6**

Characteristics of Digital Fundus Camera Systems Affecting Tonal Resolution in Color Retinal Images

Marshall E Tyler, CRA, FOPS; Larry D Hubbard, MAT;
Ken Boydston; Anthony J Pugliese **9**

Digital Color Fundus Image Quality: the Impact of Tonal Resolution

Larry D Hubbard, MAT **15**

2008 OPS Annual Education Meeting

Scientific Exhibit Winners: Prints and Stereo Slides **22**

Maximizing Quality in Ophthalmic Digital Imaging

Timothy J. Bennett, CRA, FOPS, OCT-C **32**

Color Management for Ophthalmic Fundus Photography

Leslie Bull, CRA, OCT-C, COA **40**

INDEX TO ADVERTISERS

Carl Zeiss Meditec, Inc. **47**

Escalon Digital Solutions **46**

Haag Streit **5**

HUB Pharmaceuticals **14**

Imaging Spectrum, Inc. **45**

Nidek **21**

OIS **2**

Optovue, Inc. **8**

Topcon America Corp. **48**

The Journal of Ophthalmic Photography

Founded in 1977 by the Ophthalmic Photographers' Society, Inc.; Don Wong, RBP, FOPS, Founding Editor



Managing Editor

Chris Barry, CRA, FOPS, MMedSci,
RBI, FAIMBI, AIIP, RMIP
Lions Eye Institute
Centre for Ophthalmology
and Visual Science
The University of Western Australia
2 Verdun Street
Perth 6009, Western Australia
Phone: +61 89381 0804
Fax: +61 89382 1171
cjbarry@cyllene.uwa.edu.au

Art Director

Jennifer Licata

5682 Dunnigan Road, Lockport, NY 14094
Phone: 716/390-5353 Fax: 267/390-8407
jen@licatadesign.com

Medical Advisor

Prof. Paul S. Bernstein, MD, PhD

John A. Moran Eye Center
University of Utah Health Sciences Center
65 North Medical Drive, Salt Lake City, UT 84132
Phone: 801/587-3026
paul.bernstein@hsc.utah.edu



Assistant Editor

Paula Morris, BS, CRA, FOPS
John A. Moran Eye Center
65 North Mario Capecchi Drive
Salt Lake City, UT 84132
Phone: 801/244-6290
Fax: 801/585-0430
Paula.Morris@hsc.utah.edu

Advertising Editor

Barbara McCalley

1887 W. Ranch Road, Nixa, MO 65714
Phone: 800/403-1677 or 417/725-0181 Fax: 417/724-8450
ops@opsweb.org

Case Report and Technical Tactics Editor

Michael P. Kelly, CPT

Duke University Eye Center
2351 Erwin Road, Suite 209
Durham, NC 27710
Phone: 919/684-3139
michael.p.kelly@duke.edu

Editorial Review Board

Christina Malik Consolo, CRA, COT

Royal Oak, MI, christinax4@yahoo.com

Assist. Prof. Denise Cunningham, CRA, RBP, FOPS, MEd

Bethesda, MD, cunninghamd@nei.nih.gov

Robert E. Curtin II, CRA, FOPS

Wilmington, DE, bobcurtin@comcast.net

Alan Frohlichstein, BFA, BS, CRA, FOPS

Morton Grove, IL, rasalan@sbcglobal.net

Richard E. Hackel, CRA, FOPS, MA

Ann Arbor, MI, rhackel@umich.edu

Marshall E. Tyler, CRA, FOPS

Winston-Salem, NC, mtyler@wfubmc.edu

Instructions to Authors can be found at <http://www.opsweb.org/Publicat/Journal/AuthInst.htm>

Subscription Information

The Journal of Ophthalmic Photography (ISSN 0198-6155) is published biannually by the Ophthalmic Photographers' Society, Inc. The annual subscription rate (continental U.S.A.) is \$26.00. The single copy rate is \$16.00. The annual subscription rate for Canada and overseas is \$31.00. Canadian and overseas orders are payable in U.S. bank drafts or international money order only. Checks are to be made payable to the Ophthalmic Photographers' Society. Airmail delivery is available for an additional charge. Membership in the Ophthalmic Photographers' Society includes an annual subscription to the *The Journal of Ophthalmic Photography*.

Membership requests, subscription inquiries, past issue requests and changes of address should be sent to Barbara McCalley, Executive Director, 1887 W. Ranch Rd, Nixa, MO 65714; Phone: 417/725-0181; Email: ops@opsweb.org.

The Ophthalmic Photographers' Society

The Ophthalmic Photographers' Society (OPS) is a nonprofit international organization dedicated to the advancement of photography as applied to ophthalmology and visual science. Our membership, numbering over 1000, includes a broad spectrum of professionals in eye health care, including ophthalmologists, optometrists, photographers, nurses, ophthalmic medical personnel, and basic researchers. The Society's educational programs, designed to supplement the professional expertise of our members, have earned the OPS recognition as being an organization dedicated to the elevation of standards in the craft. The Society's major publication, *The Journal of Ophthalmic Photography*, presents tutorials and articles on photographic techniques, instrumentation, and related topics in ophthalmology. Visit us online at www.opsweb.org.

Copyright

The Ophthalmic Photographers' Society. All rights reserved. Printed in the U.S.A. None of the contents may be reproduced by mechanical or electronic processes, stored in a retrieval system or transmitted by any means without prior written permission from the Editor.