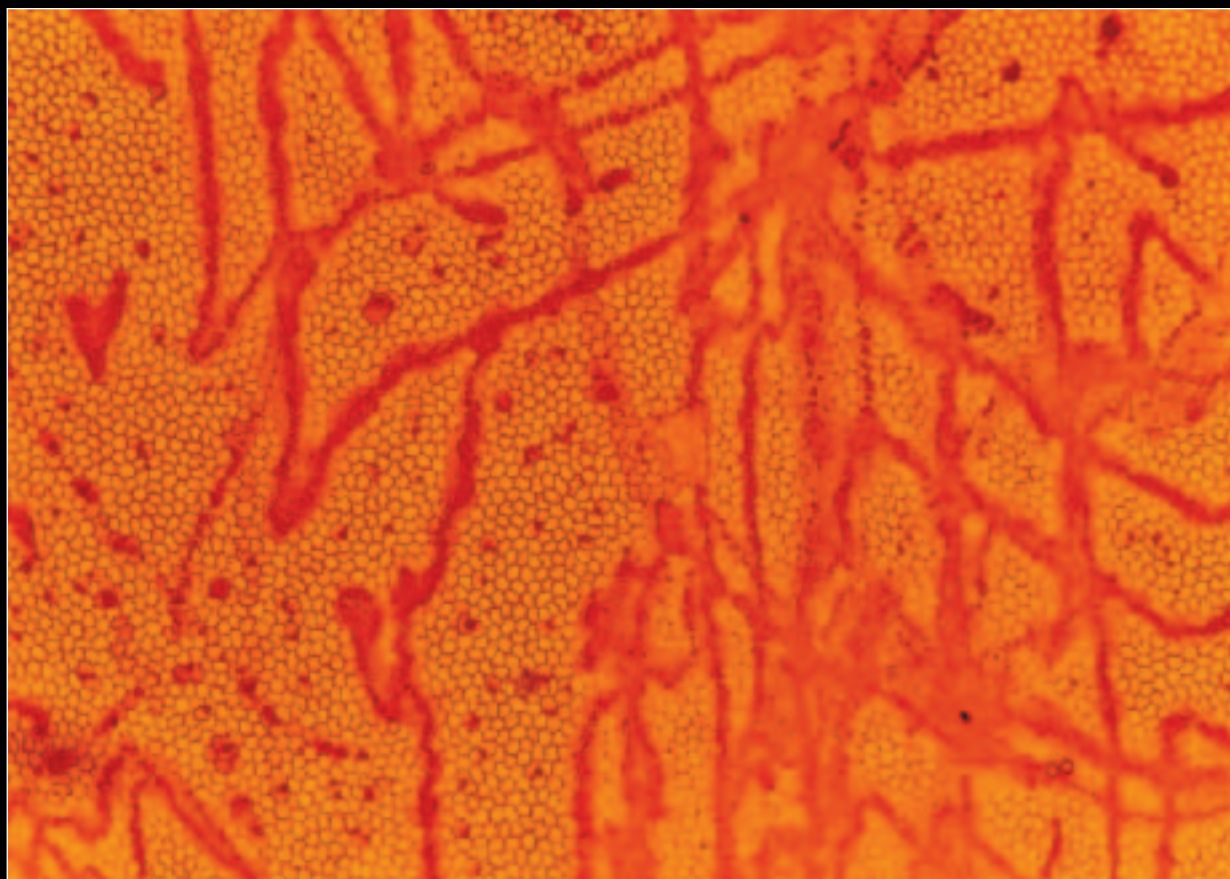


The Journal of Ophthalmic Photography

VOLUME 22 • NUMBER TWO • OCTOBER, 2000



**1999 SCIENTIFIC EXHIBIT
FIRST PLACE WINNER, PRINT DIVISION**

Corneal Endothelial Photography

IOL Damaged Pig Endothelium

Georgia Lea, BS

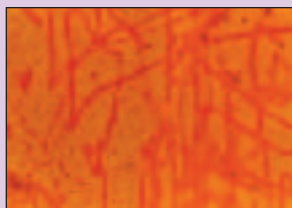
Emory Eye Center, Atlanta, GA

The Journal of Ophthalmic Photography

Volume 22 Number Two

October 2000

About the Cover:



The image shows fresh pig corneal endothelium stained with Alizarin Red after contact with the anterior surface of an intraocular lens. The lens was attached to a plastic rod on its posterior side and lowered mechanically onto the endothelium with twenty grams of weight.

Georgia Lea worked at Emory University, in the lab of Henry Edelhauser, Ph.D., for two years after graduating from Kansas State University. She is currently a first-year medical student at the Emory University School of Medicine.

ORIGINAL ARTICLES

- Telephoto-Screening for Retinopathy of Prematurity**
John T. Flynn, MD, Ditte J. Hess, CRA. **54**
- Dynamic Visualization of Change in Ophthalmic Images**
Robert H. Eikelboom, Christopher J. Barry, Kanagasingam Yogesan .. **58**
- Benefits of Using Digital Images and the Internet for Conducting Ophthalmic Consultations Between Indonesia and Australia**
Sjakon G. Tahija MD, Andi Yudhianto **62**
- The 35-Year Journey of the Hand-Held Retinal Camera**
Ben C. Szirth, PhD, William V. Good, MD,
Marco A. Zarbin, MD, PhD, FACS **64**
- Measurement of Aqueous Flow by Photogrammetry**
Olle Holm MD, PhD, Torsten Krakau MD, PhD **72**
- Imaging the Tear Film**
Dr Jean-Pierre Guillon, BSc(OD) London, PhD DPA **76**
- Infrared Targeting for Photography of Corneal Crystals in Cystinosis**
Csaba L. Martonyi, CRA, FOPS **80**

PATIENT CARE CORNER

- Eye Holding During Ophthalmic Photography, or – Let There Be Light!**
Ethan Priel **69**

TECHNICAL TACTICS

- The Application of a Table-Mounted Fundus Camera as a Portable Unit**
Denise Cunningham, CRA, RBP, MEd **82**
- Fundamentals 1: Corneal Epithelial Fluorescein Staining**
Dr Steven Wiffen, Chris Barry **84**

DIGITAL TOOLBOX

- Publishing Your Images: A Guide to Producing High Quality Digital Images for Print Media**
Jennifer Licata **86**

CASE STUDIES

- Canthaxanthine Induced Retinopathy**
Michael S. Vaphiades, DO, Lawrence M. Merin, RBP,
Rickey D. Medlock, MD **90**

- EDITORIAL 52
CALENDAR 71
INSTRUCTIONS TO AUTHORS 92