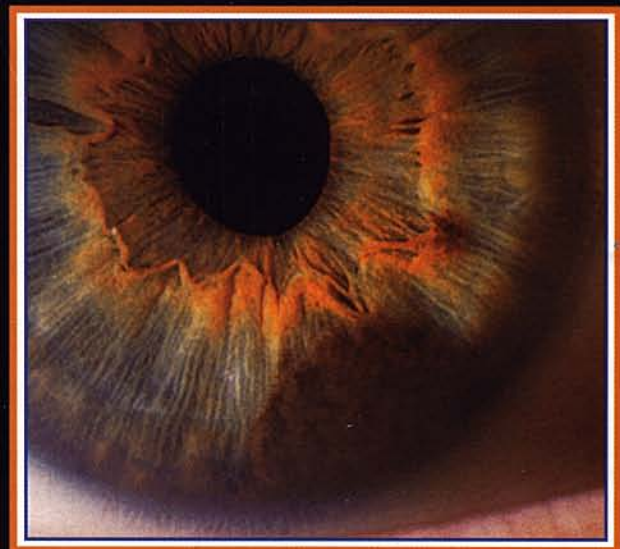
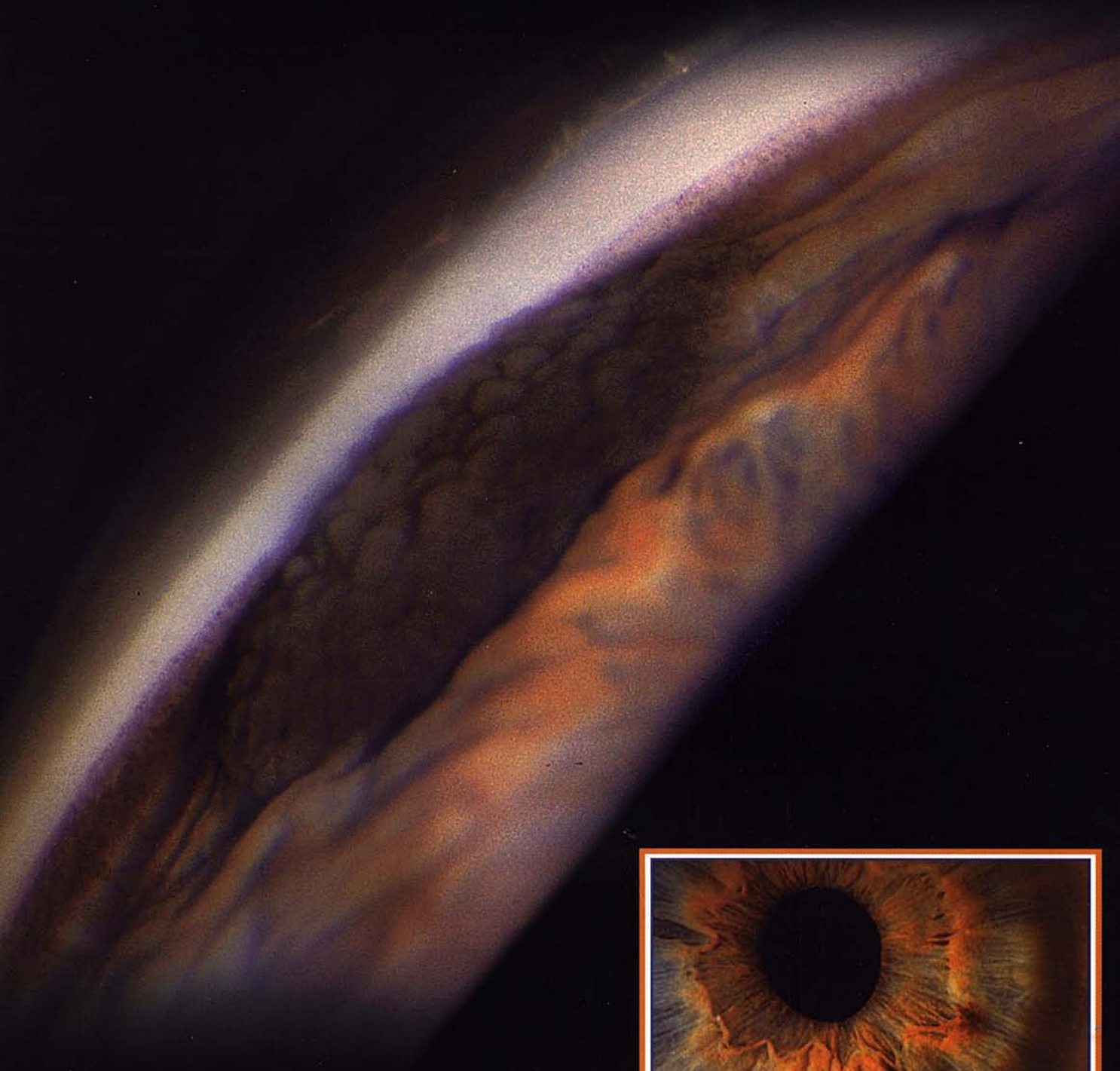




# The Journal of Ophthalmic Photography

Volume 18, Number 1  
April 1996



**BEST of SHOW**

Print Division

*Ophthalmic Photographers' Society  
1995 Scientific Exhibit*

# The Journal of Ophthalmic Photography

Volume 18 Number 1  
April 1996

Founded in 1977 by the Ophthalmic Photographers' Society, Inc.  
Don Wong, F.O.P.S., Founding Editor

## CONTENTS

### ARTICLES

<b>Designing and Implementing a New Clinical Ophthalmic Photographic Service</b> Lawrence M. Merin, RBP, FIMI, FOPS .....	5
<b>On Site Profile: The Biomedical Photographic Communications Program at the Rochester Institute of Technology</b> Michael R. Peres, MS, RBP, FBPA & William S. Fischer, CRA .....	14
<b>Evaluation of Blood Vessel Assessment Techniques in Animals with Retinal Vascular Disease</b> John S. Penn, Ph.D. & Mark M. Henry, BS .....	26
<b>Case Report: Oral Fluorescein</b> Jeffrey A. Sobel, CRA, MBA, FOPS .....	38
<b>Ophthalmic Photographers' Society 1995 Scientific Exhibition .....</b>	<b>20 - 25</b>
<i>ASK MR. BARRIER FILTER .....</i>	<i>42</i>
<i>CALENDAR .....</i>	<i>46</i>
<i>CERTIFIED RETINAL ANGIOGRAPHERS .....</i>	<i>19</i>
<i>DETAILS ON THE DIGITAL IMAGING SEMINAR.....</i>	<i>44</i>
<i>INSTRUCTIONS TO CONTRIBUTING AUTHORS .....</i>	<i>37</i>

Front Cover:

**1996 Scientific Exhibit Best of Show -Print Division  
"Malignant Melanoma of the Iris"**

Marshall E. Tyler, CRA, FOPS  
Wake Forest University Eye Center  
Winston-Salem, NC