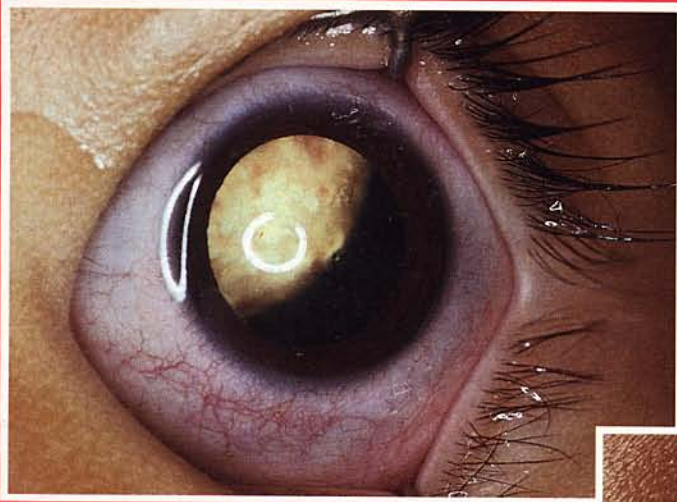


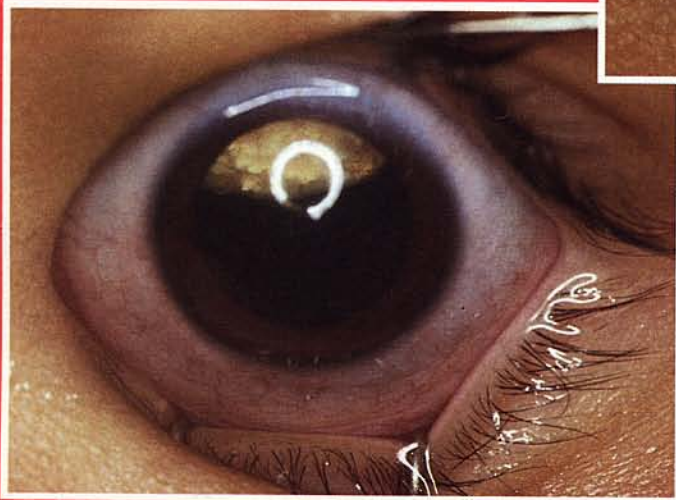
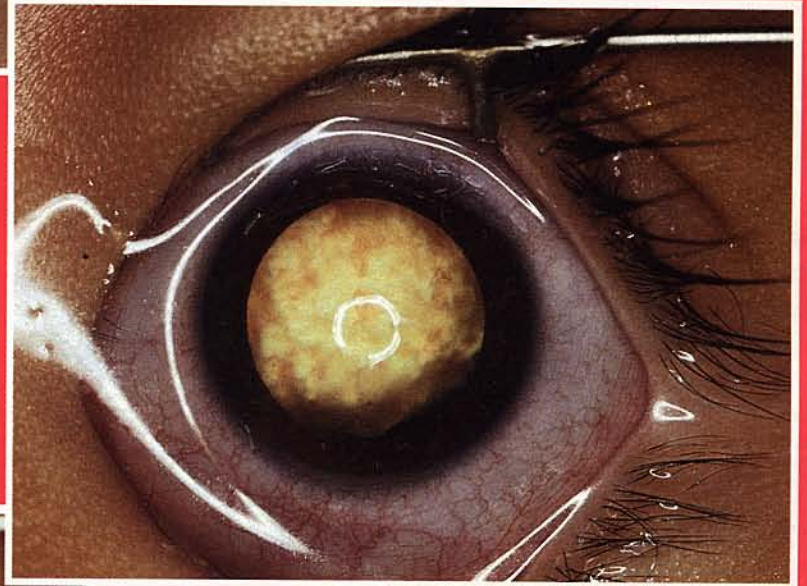


The Journal of Ophthalmic Photography

Volume 13, Number 2
October 1991



**Photography of
Retinoblastoma**



The Journal of Ophthalmic Photography

Volume 13 Number 2

October 1991

Founded in 1977 by the **Ophthalmic Photographers' Society, Inc.**
Don Wong, F.O.P.S., Founding Editor

CONTENTS

ARTICLES

Diagnosis and Treatment of Retinoblastoma

Susan H. Senft 53

The Modified Equator-Plus Fundus Camera. Standard Use and Adaptations for Photography of Retinoblastoma

Bernard C. Szirth and A. Linn Murphree 58

Use of Ocular Fundus Reflex Photography for Documentation of Retinoblastoma Tumors

Bernard C. Szirth, G. Dianna Wong, Wendy L. McNamara, and A. Linn Murphree 65

Combined Still Video and Fundus Camera System

Sadao Kanagami and Saburo Suzuki 71

Automatic Processing of Fluorescein Angiographic Film With a Modified MohrPro 8 Print Processor

Alan Frohlichstein 77

PHOTO ESSAY

Documentation of Cystinosis

Bailey L. Lee, Lawrence M. Merin, Dan B. Jones, and Ramon L. Font 80

EDITORIAL

Fluorescein Angiography Made Easier with Chromogenic Film

Lawrence M. Merin 82

EDUCATIONAL RESOURCES

The Ocular Fundus. A Photographic Documentation Atlas With Diagnostic and Therapeutic Guidelines by Dr Med Horst Huisman, et al. (review by John L. Johnson). *Retinal Nerve Fiber Layer Photography. An Introduction to Interpretation for Ophthalmologists, Photographers, Students, and Others Interested in the Visual Documentation of Early Glaucomatous Optic Atrophy* by Louis W. Roloff (review by John L. Johnson). *Article abstracts:* Calcein angiography: a preliminary report on an experimental dye; Severe anaphylactic reaction to orally administered fluorescein; Angiography by the oral route using enteric-coated capsules; A new analysis method for cataractous images taken by retroillumination photography; The multi-purpose camera: a new anterior eye segment analysis system; Corneal topography: a new photokeratoscope; Improved resolution of specular micrographs; Are seven standard photographic fields necessary for classification of diabetic retinopathy; Digital fluorescein teleangiography; Nerve fiber layer photography: a comparative study.

CORRECTIONS 86

1990 OPS Scientific Exhibit

Q&A 83

Unclear Post-operative Laser Photographs

CALENDAR 79

INDEX TO ADVERTISERS 79

CERTIFIED OPHTHALMIC PHOTOGRAPHERS 87

Instructions to Authors — See June 1991 issue, p. 35

Copies of the Instructions are available on request to the Editor.

Front cover: Ophthalmic photography plays a pivotal role in the diagnosis and follow up of patients with retinoblastoma. Correct eye positioning and use of appropriate camera and flash systems are essential when documenting the white reflex of leukokoria, which is commonly noted in patients with this disease. For an explanation of this technique and the equipment most suitable for its performance, see "Use of Ocular Fundus Reflex Photography for Documentation of Retinoblastoma Tumors" in this issue.